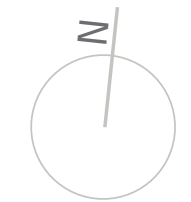


# The Whiddon Group Redhead RACF, Redhead

## LA03 - Site plan

### Legend

- 1 Entry signage and sequence
- 2 Community hubs with playground, bowling green and communal facilities
- 3 Nature walk
- 4 Private residential courtyards
- 5 South facing ornamental garden
- 6 Vegetated landscape mounds
- 7 Viewing platform/ pavilion
- 8 Staff courtyards
- 9 Kinetic sculptures
- 10 MU34a vegetation refer to Biodiversity Assessment
- 11 Vegetated OSD basin to Engineer details
- 12 New screen tree planting to boundary. Spacing in accordance with RFS guidelines
- 13 New 1800mm high radiant fence & gate to western boundary as per RFS requirement





# The Whiddon Group Redhead RACF, Redhead

## LA07 - Detail Plan 3

### Legend

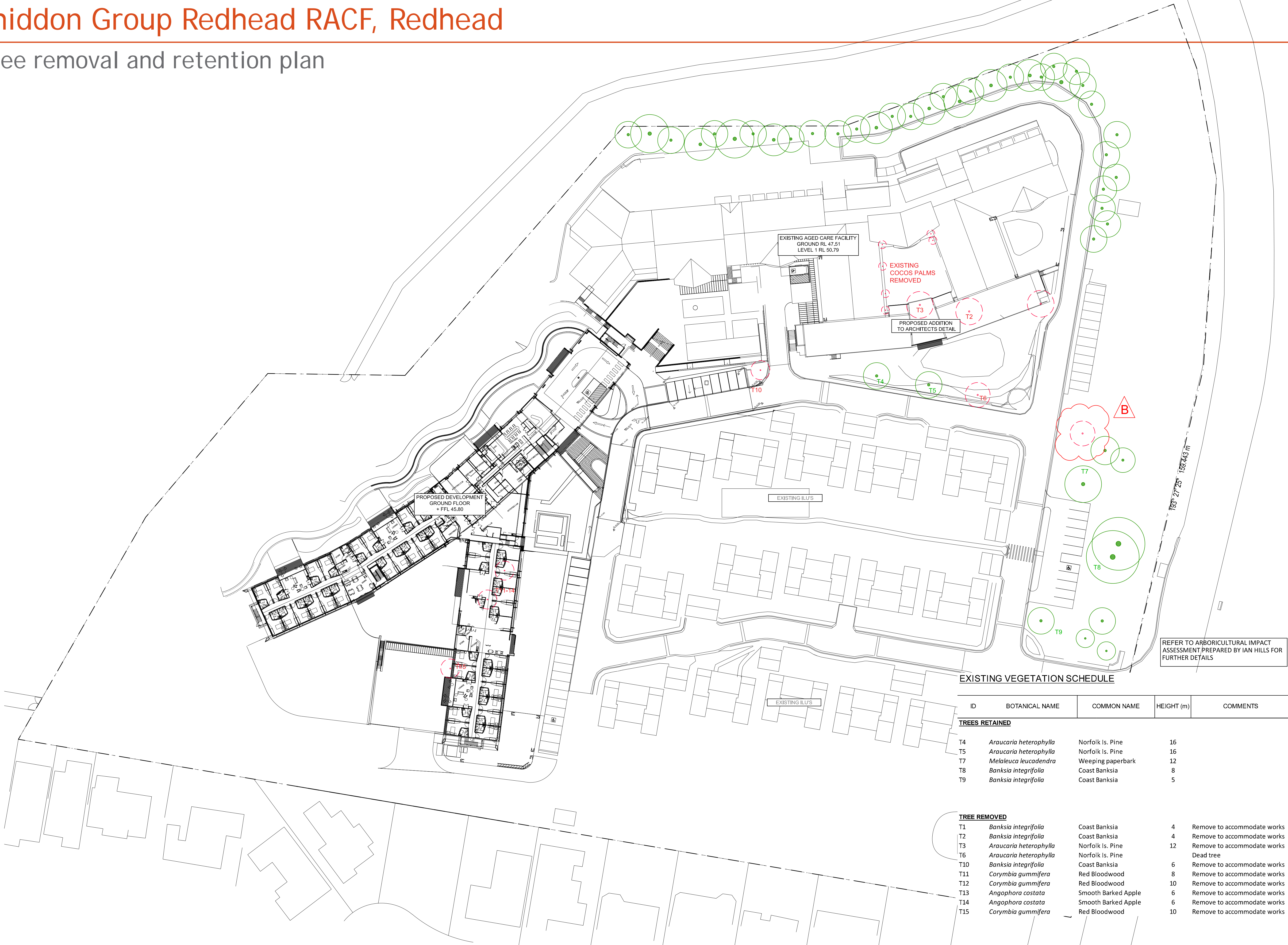
- 1 Low height planting to roof level 1 roof
- 2 Open lawn with local sculpture art display
- 3 Ornamental boats display with hanging wind chimes
- 4 Feature focal point: water feature/ local sculpture
- 5 Raised vegetable garden
- 6 Men's sheds/ potting sheds
- 7 Sensory planting
- 8 Screen planting
- 9 Hanging plant pots over retaining wall
- 10 Kinetic sculptures
- 11 Existing clumps of MU34a vegetation retained MAX. 30% of area as per Newcastle Bushfire Consulting report
- 12 Staff courtyard
- 13 Screening trees planted in accordance with setbacks & spacings required by RFS
- 14 Maintained grass area between heath as per Newcastle Bushfire Consulting report
- 15 New 1800mm high radiant fence & gate to western boundary as per RFS requirement





# The Whiddon Group Redhead RACF, Redhead

## LA08 - Tree removal and retention plan





# The Whiddon Group Redhead RACF, Redhead

## LA10 - Landscape sections

